



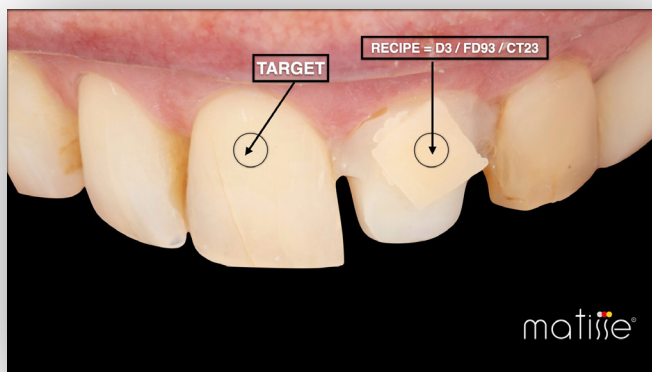
What is Matisse

Matisse is a software for ceramic mixing and layering, it is embedded with comprehensive data and artificial intelligence technology to simplify the process of dental shade matching. The software Matisse that is compatible with **OPTISHADE STYLEITALIANO** provides complete solutions for teeth restoration: from shade taking and shade reading to generating recipes with the most commonly used ceramic brands. The recipes that Matisse provides consist only of pure ceramic powders to create restorations that mimic the histo-anatomy of the natural tooth by taking three important parameters into consideration:

- The color information of the preparation
- The color information of the target tooth
- The total amount of space available for the restoratio

*more details about the compatibility **OPTISHADE STYLEITALIANO**-Matisse on pages 42-44 in the booklet

The end result is a restoration with no observable color differences in the patient's mouth.



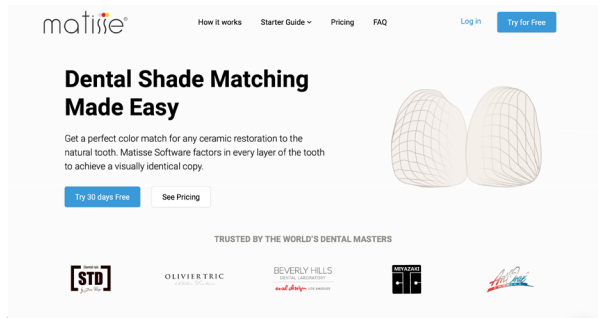
MATISSE 30 Days Free licence

Registration process

Matisse Software offers a 30 Days Free Trial.

Go to www.matisse.ai, click on **TRY 30 DAYS FREE** and sign in with your email and a password.

During the trial period you'll receive emails with tutorials and tips on real cases. You'll also have the opportunity to book a short Zoom Call with a Matisse trainer to assist you step by step in one of your cases using Matisse Software.



IMPORTANT NOTE: When the free trial ends, you can choose your subscription plan: monthly or yearly.

You will need to insert your **OPTISHADE STYLEITALIANO** serial number in the registration form.



MATISSE 30 Days **Free** **licence**



Go to website!